

Certificate of Analysis

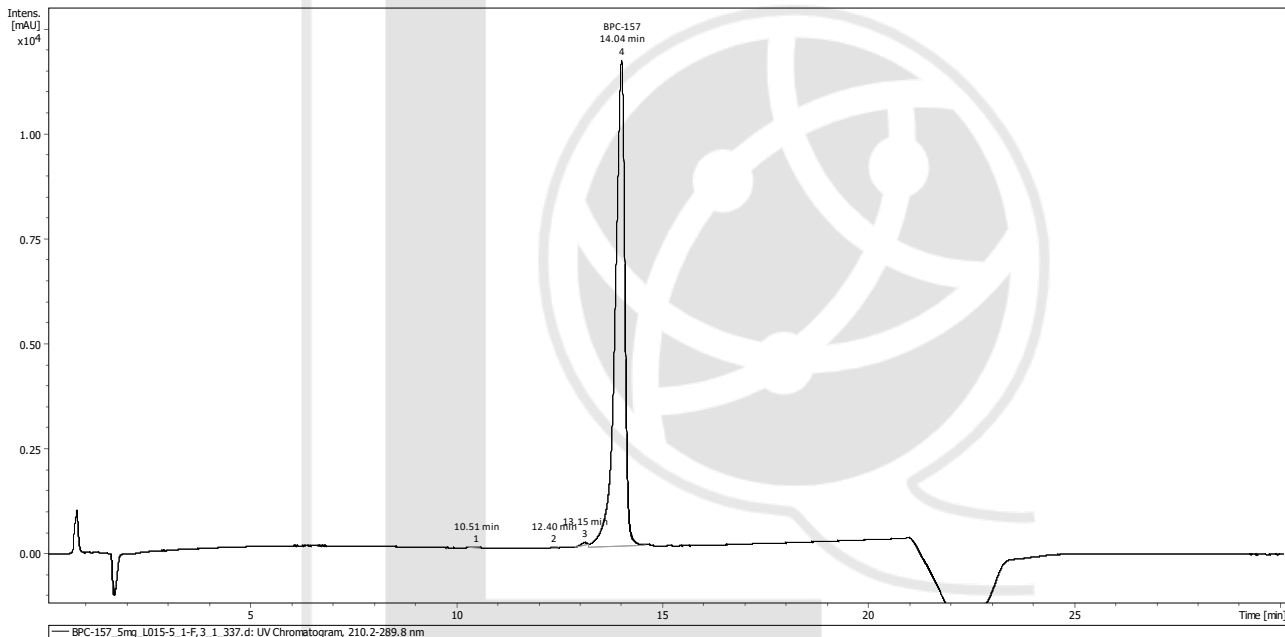
BPC-157 (Bepecin) 5 mg

H-Gly-Glu-Pro-Pro-Pro-Gly-Lys-Pro-Ala-Asp-Asp-Ala-Gly-Leu-Val-OH

Compound : BPC-157 **Client** : LQ Lab Peptides
Lot number : L015-05 <http://www.lab-peptides.com/>
Analysis date : 2024-02-07
Purity % : 99.61%
Method : Mass Spectrometry and UV

PubChem CID: 9941957

<https://pubchem.ncbi.nlm.nih.gov/compound/9941957>



PEAK LIST				Number of detected peaks: 4	
	Time (min)	Area	%Area		
1	10.51	1.62E+02	0.08		
2	12.40	1.21E+02	0.06		
3	13.15	4.66E+02	0.24		
4	14.04	1.92E+05	99.61	BPC-157	

Purity determined using UV detection
 Peak identity confirmed by mass spectrum evaluation
 Expected mass : 1418.70 g
 Measured mass : 1418.69 g
 Molecular weight confirmed

Note: Injectable peptides may contain salts and sugars to aid in solubility and act as pH buffers. These are not normally detected using UV and are not considered impurities.

Analysis Performed by
 Ken Pendarvis, ChE
 Analytical Chemist
 MZ Biolabs
contact@mzbiolabs.com



2024-02-07